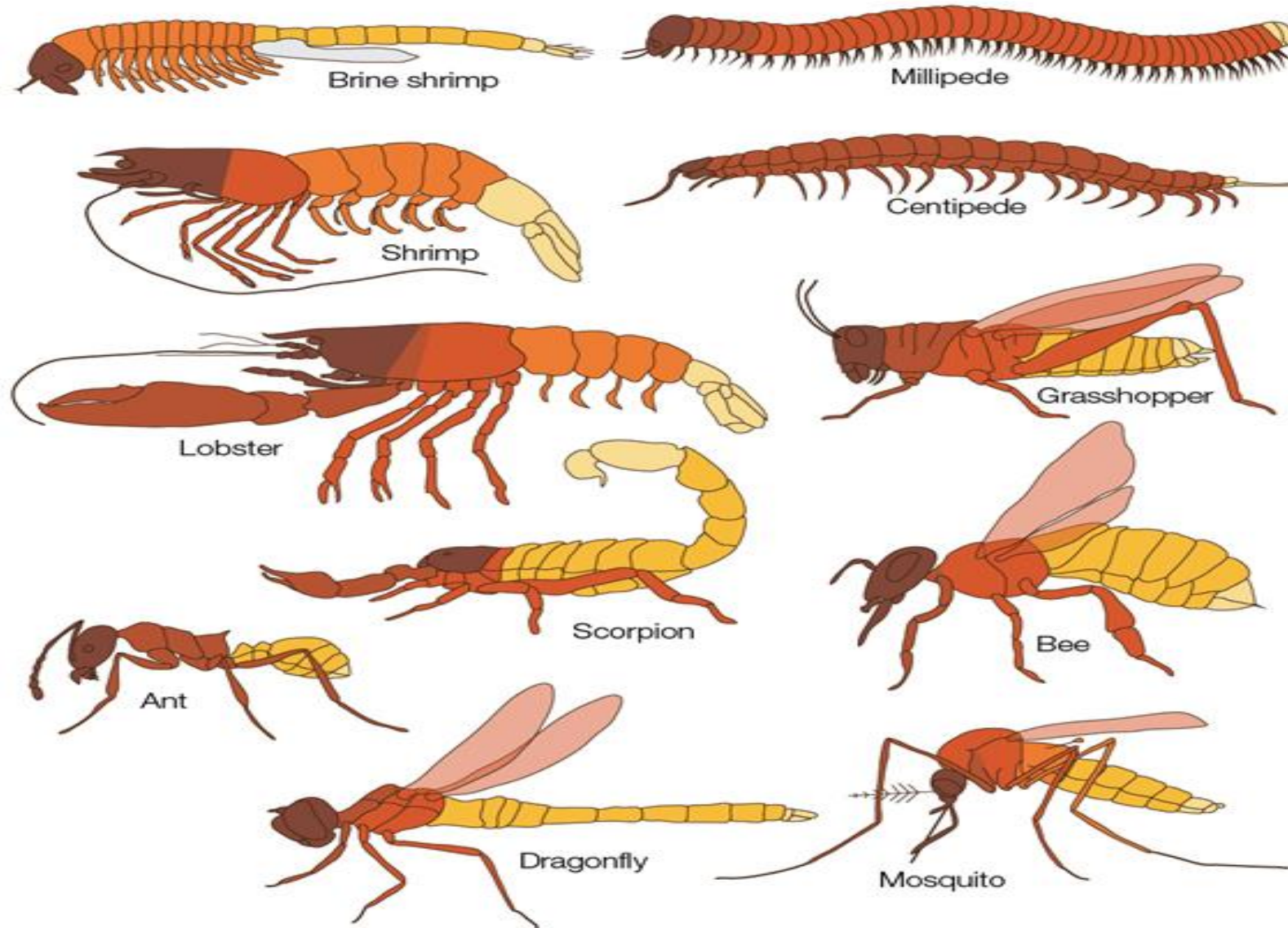


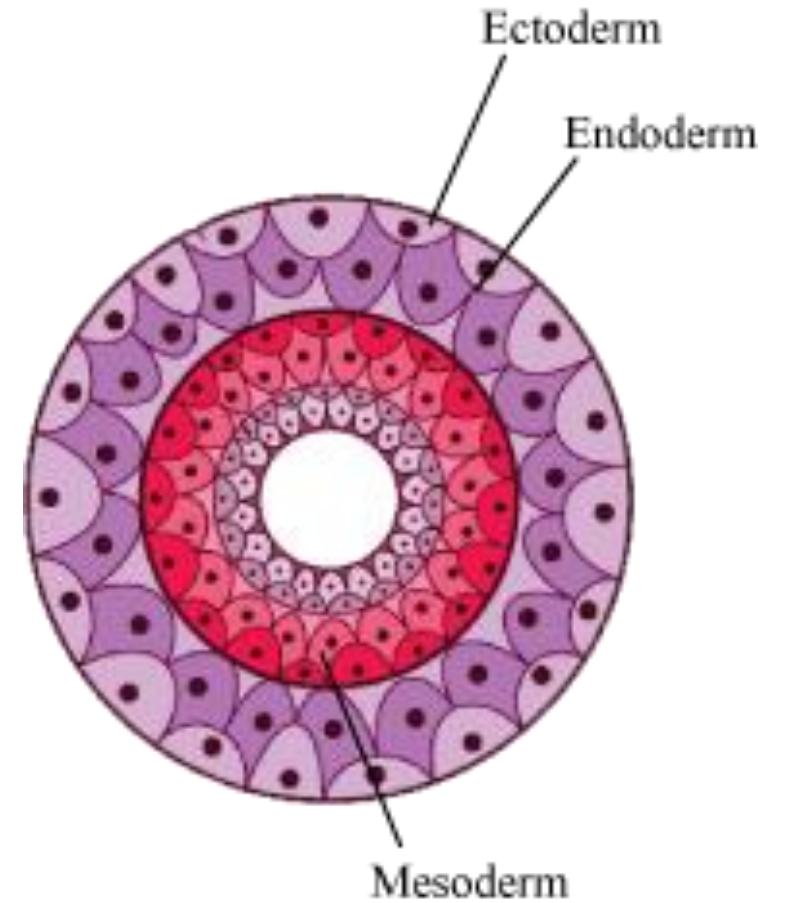
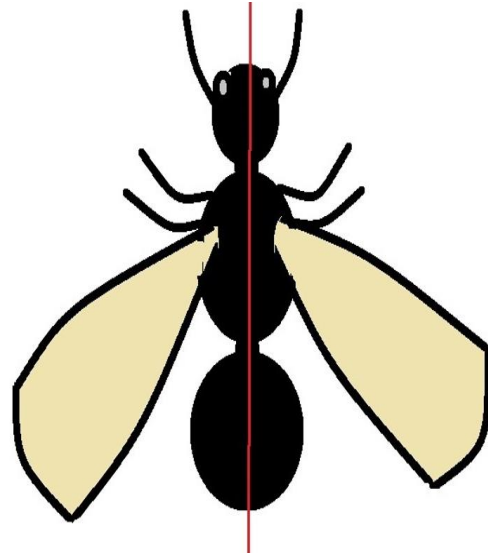
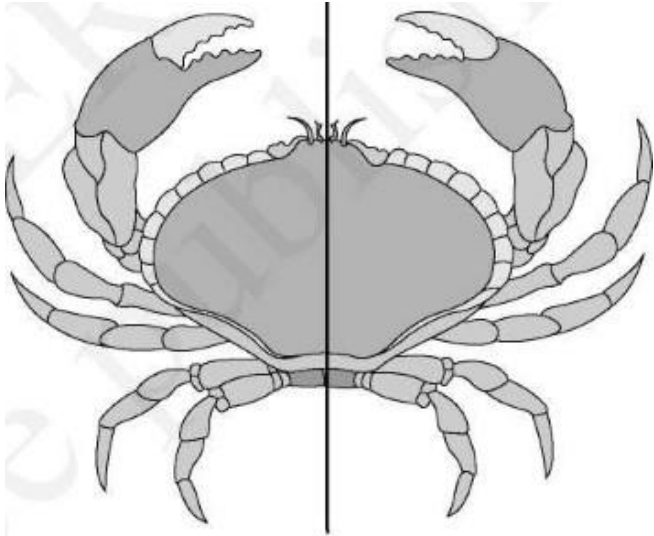
Arthropoda :
General Characters

- 'Arthropoda' a Greek word => 'Arthros' meaning Joint and 'Podos' meaning Foot
- Largest Phylum that comprises about 11,340,000 species (83% of animal species)
- One of the most successful invertebrate.

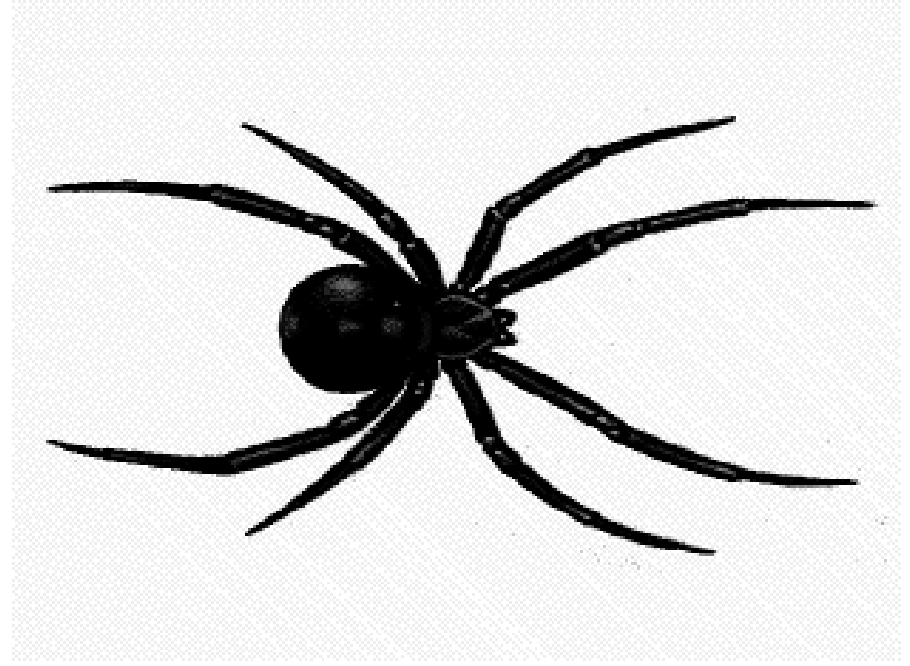
1. Organ level of body organization.



2. Body is bilaterally symmetrical, triploblastic and metamerically segmented.



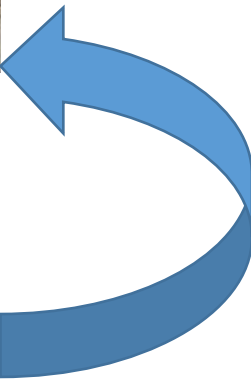
3. Jointed and paired appendages.



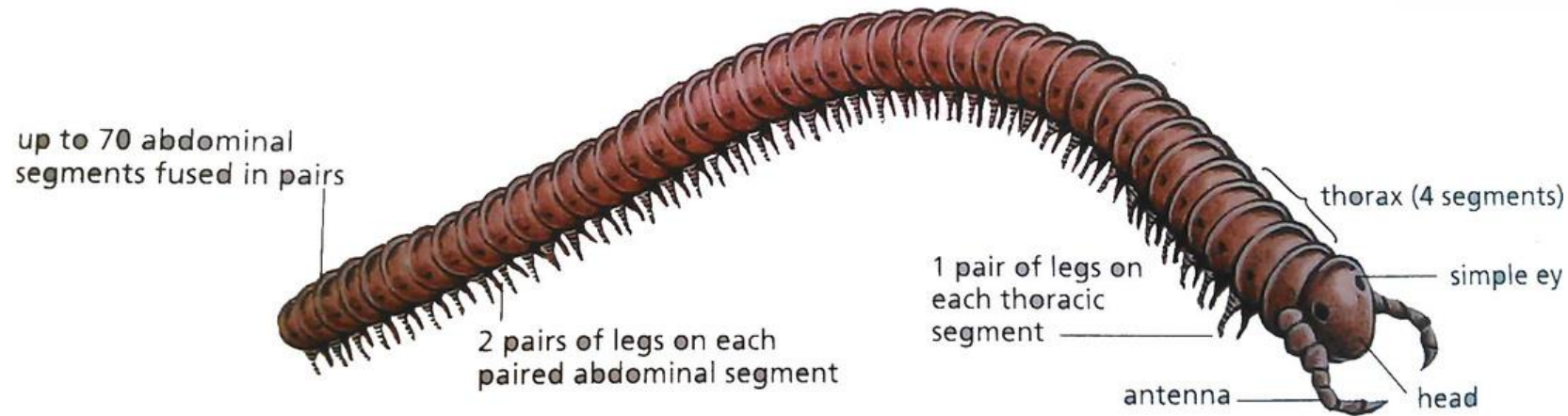
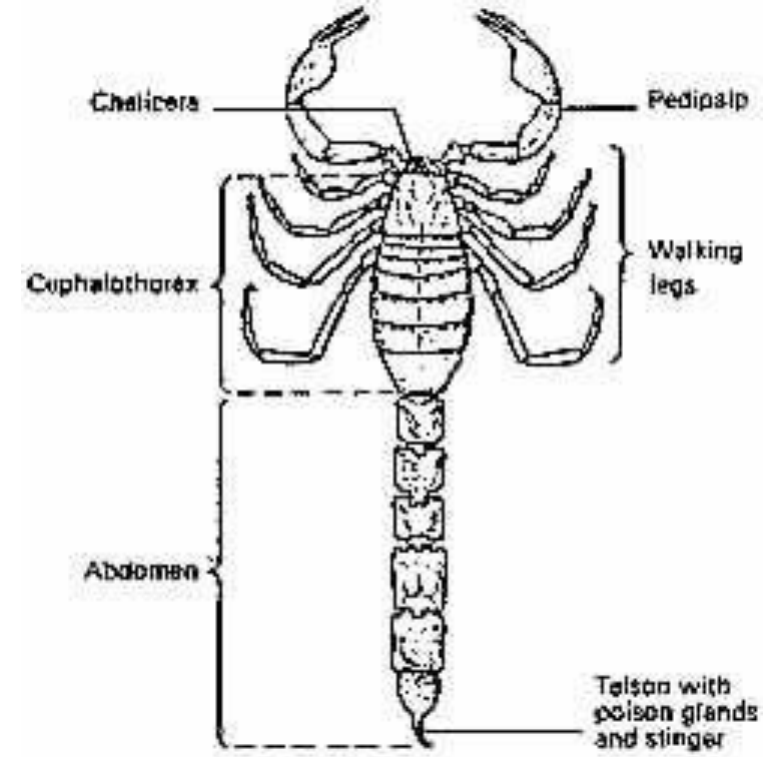
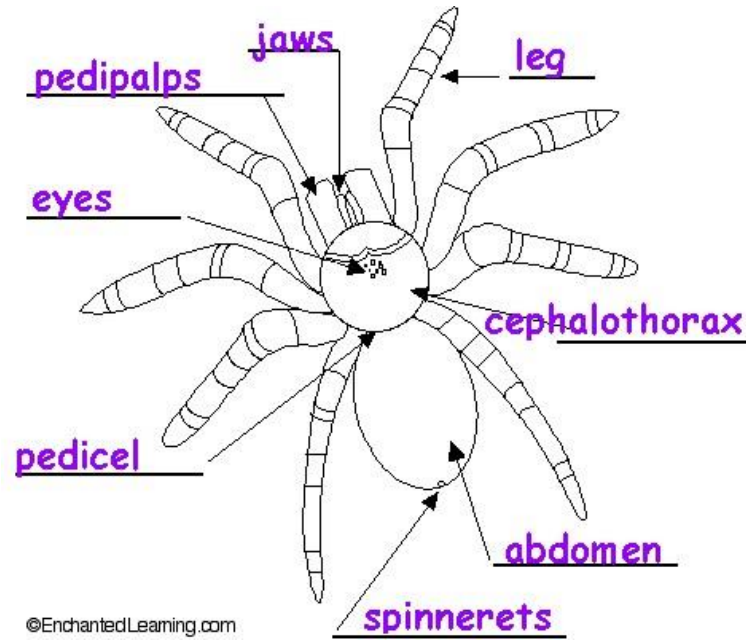
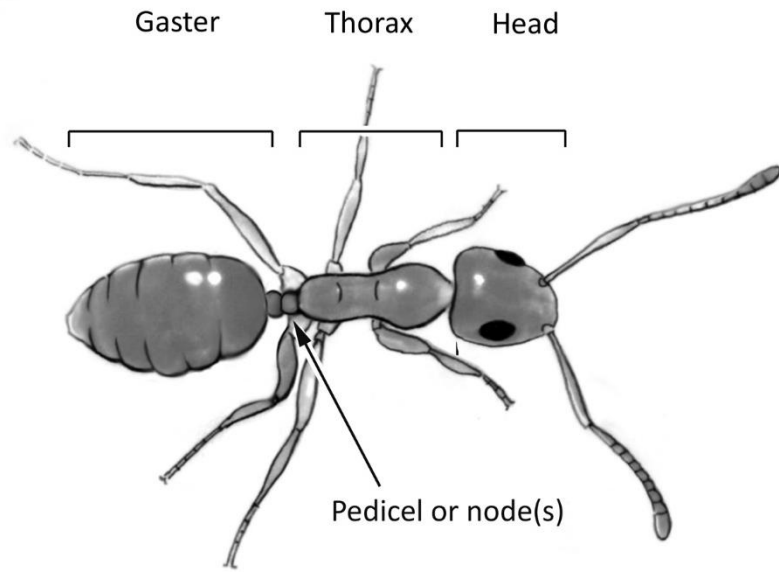
4. Exoskeleton is made up of **Chitin**.



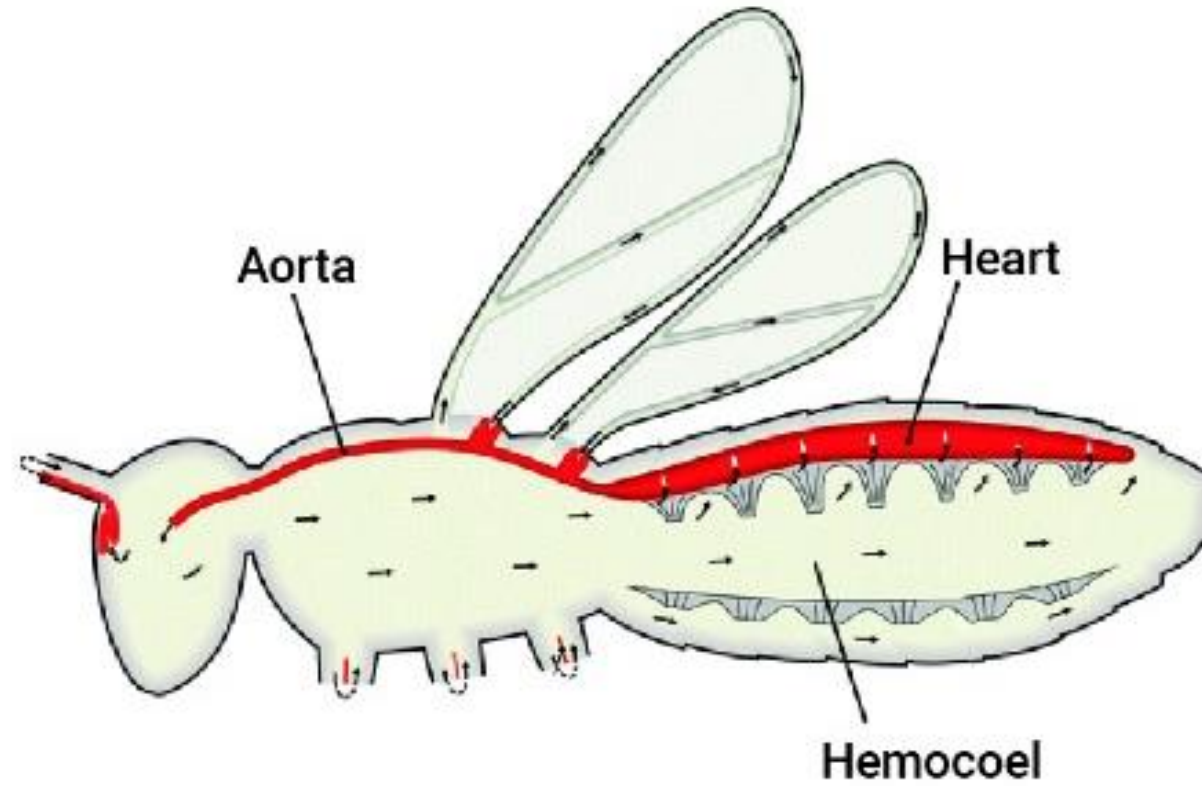
Molting or Ecdysis



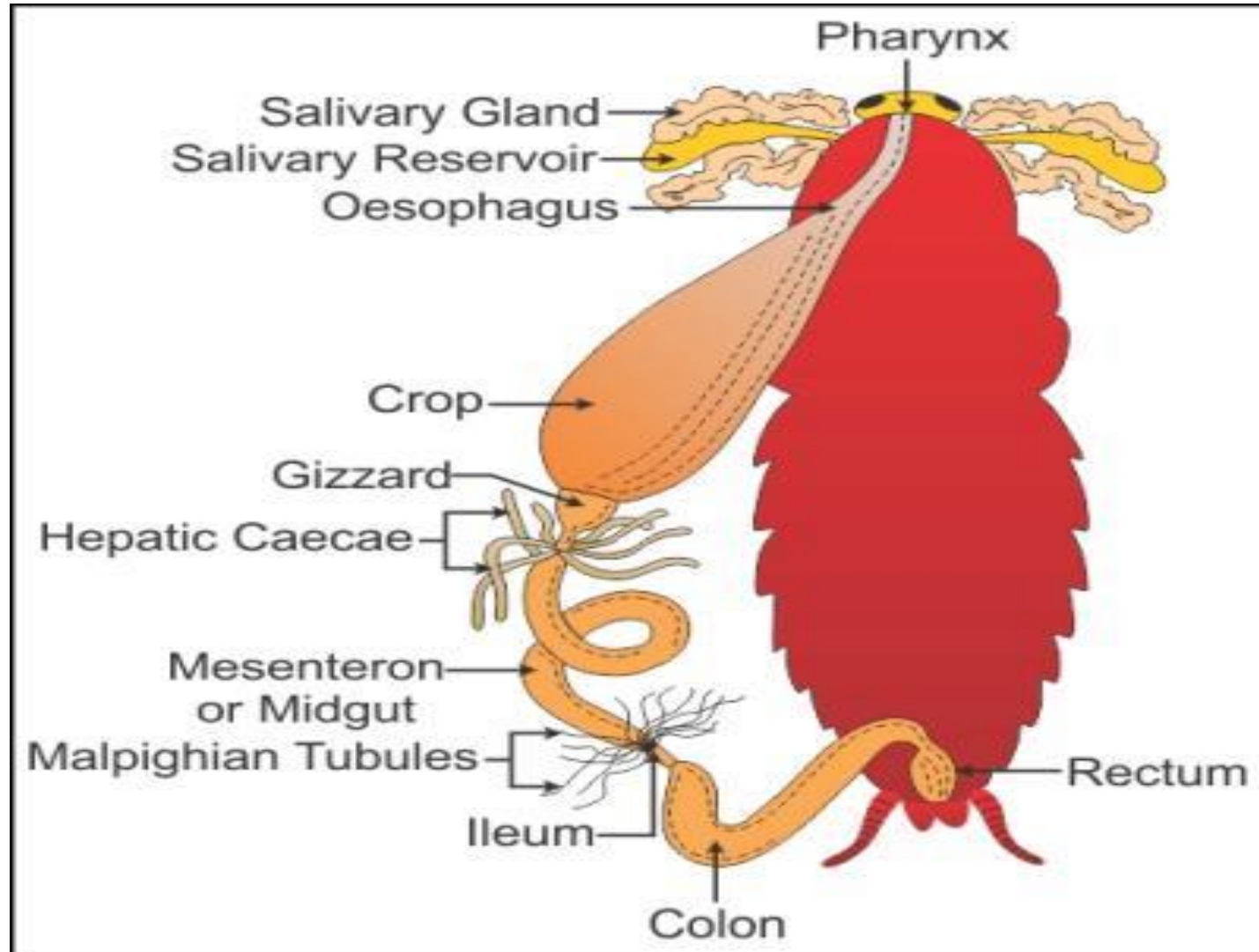
5. Body is divisible into head thorax and abdomen.



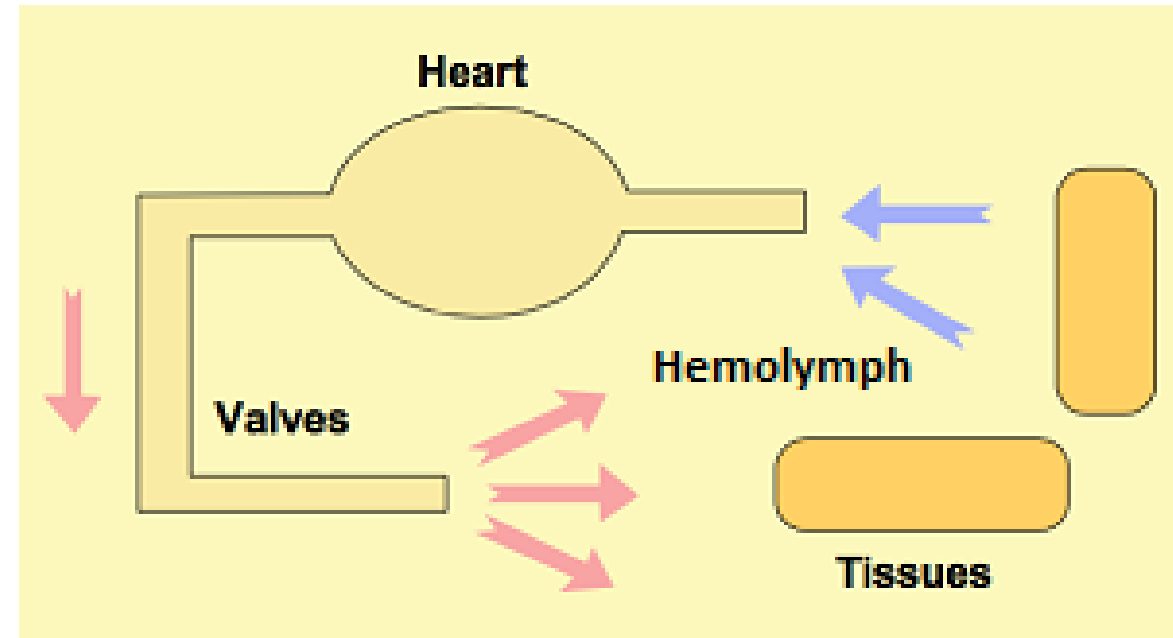
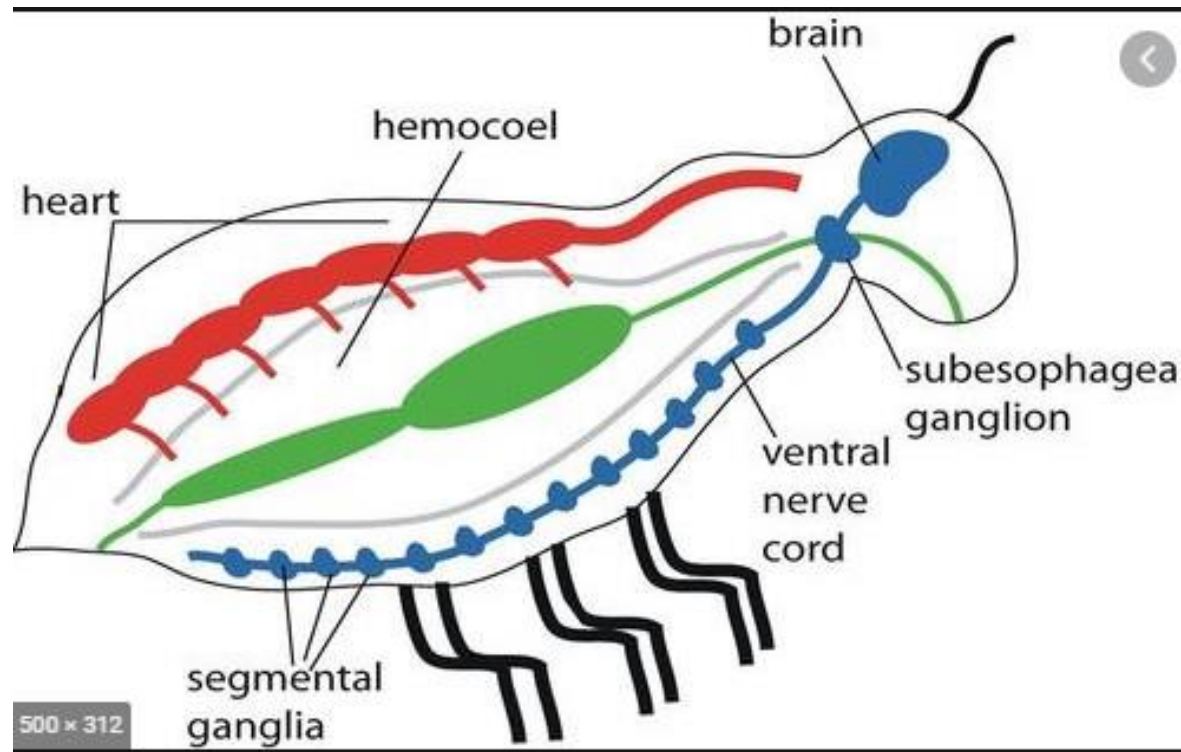
6. Presence of haemocoel, haemolymph.



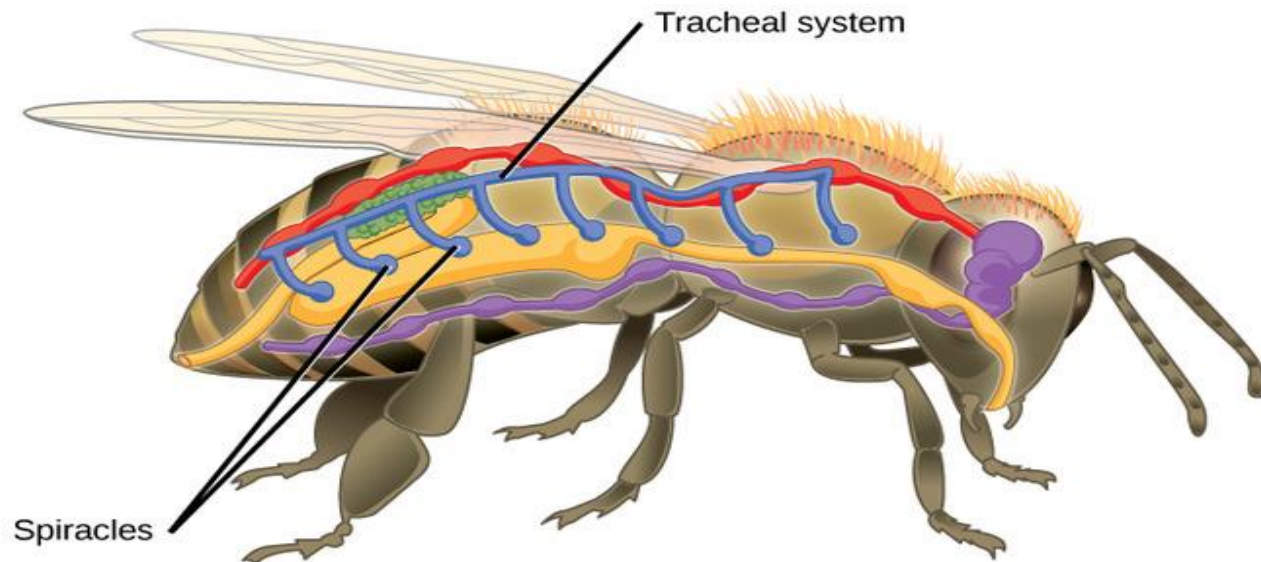
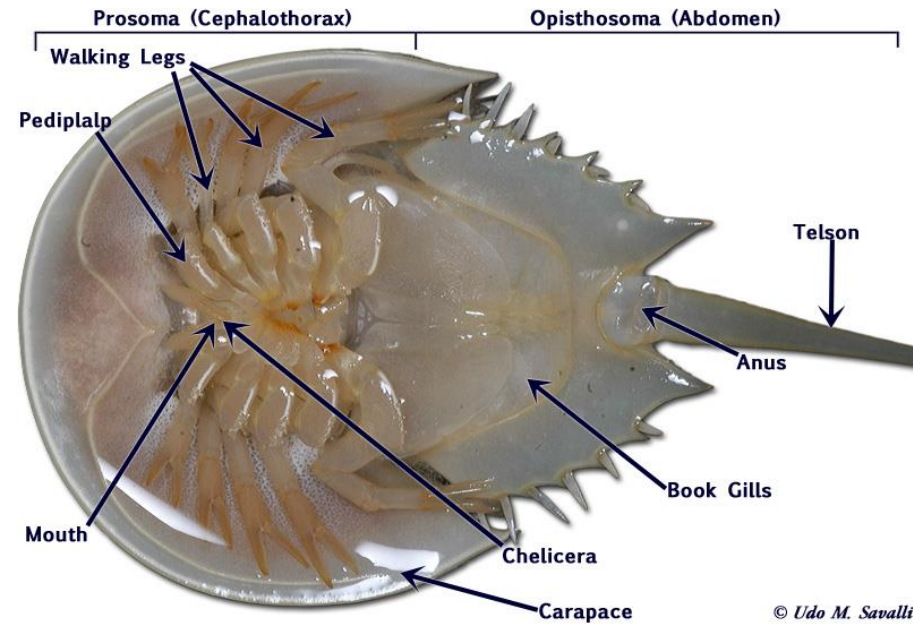
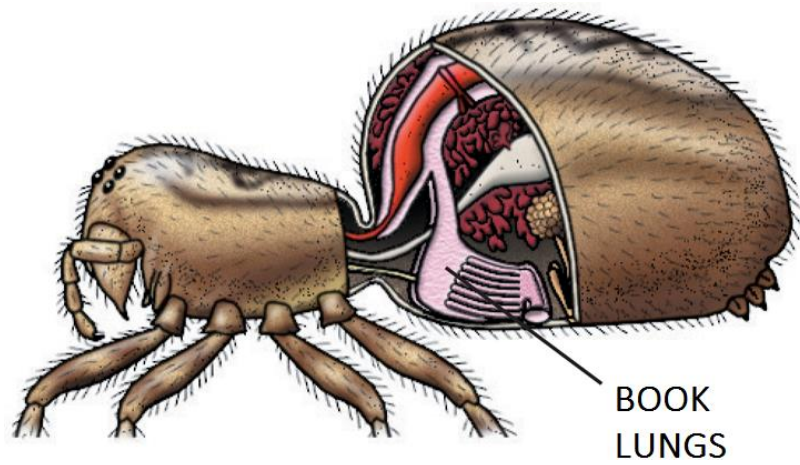
7. Complete digestive system.
Different feeding habits according to types mouth parts.



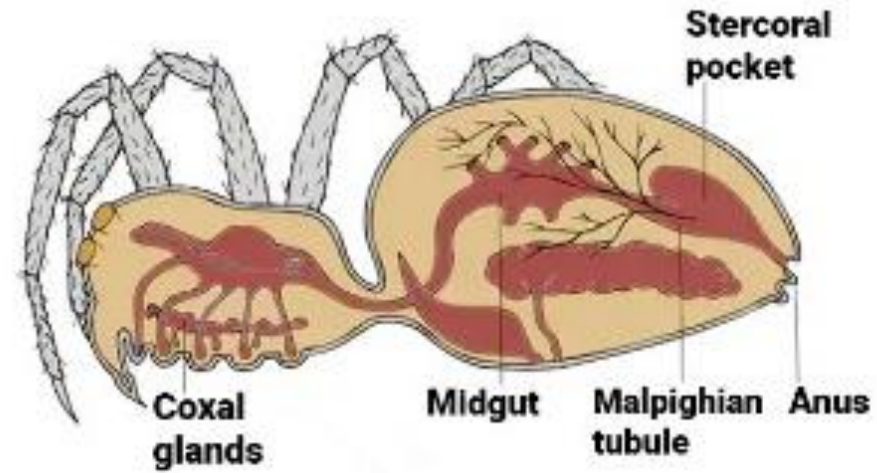
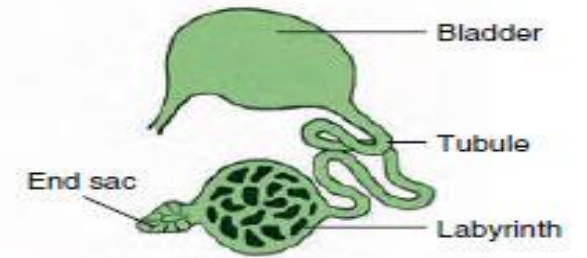
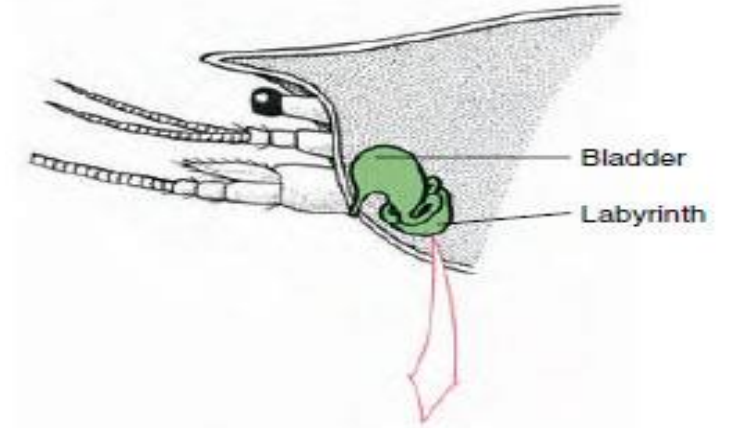
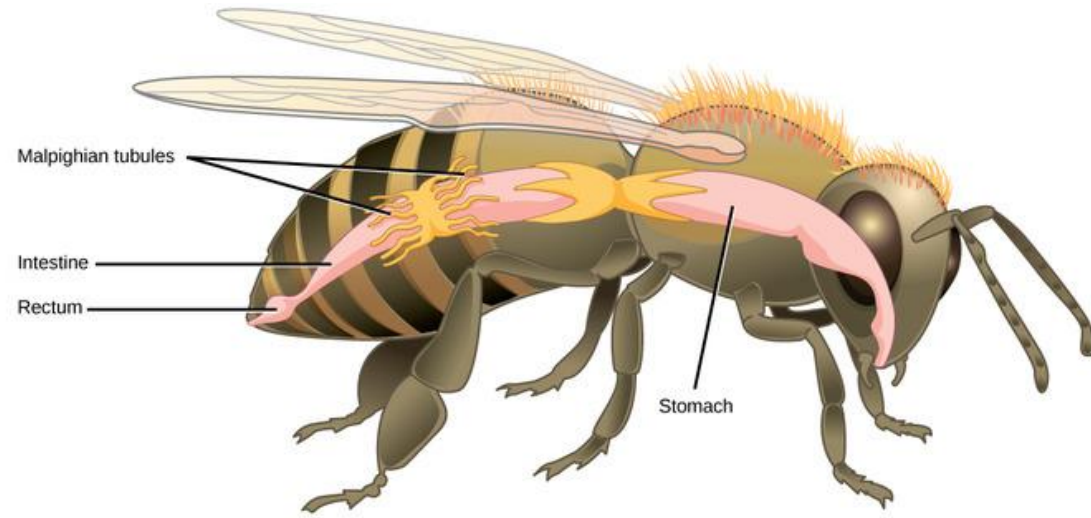
8. Open circulatory system.



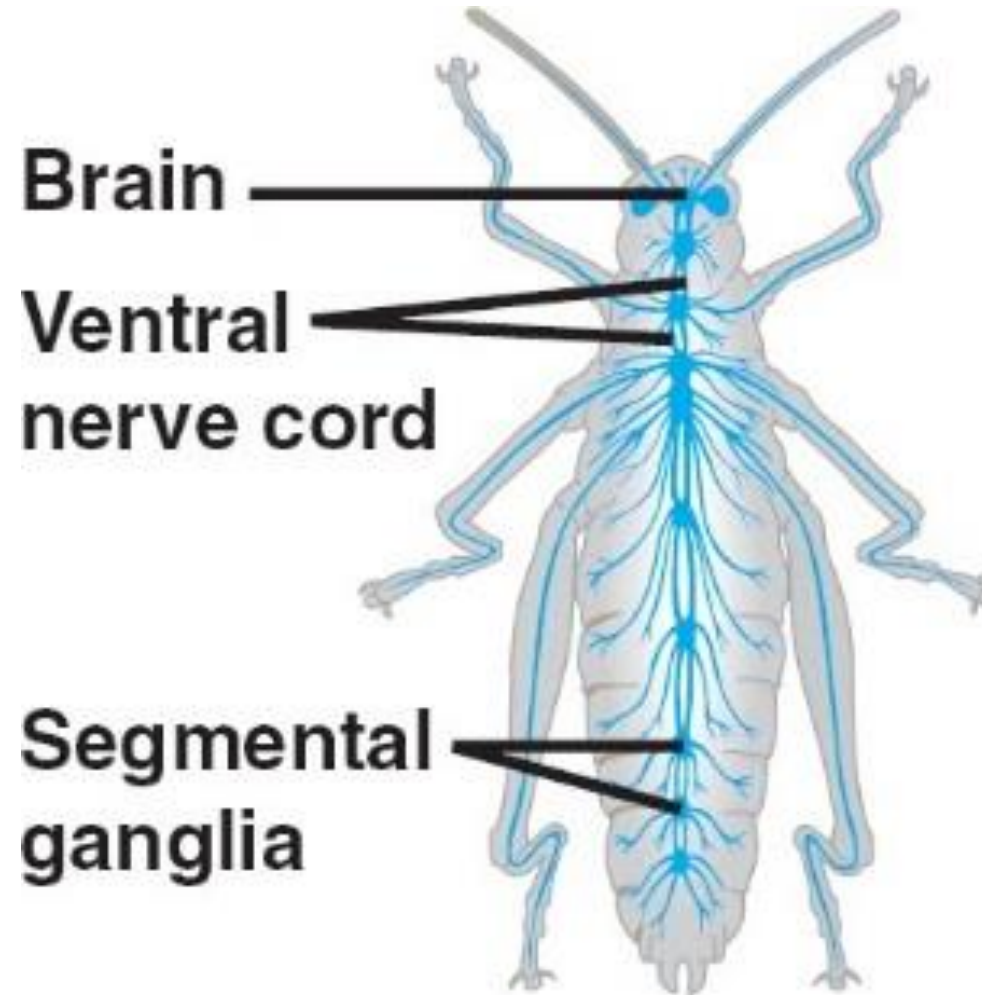
9. Respiration through body surface, gills, tracheae, book-lung.



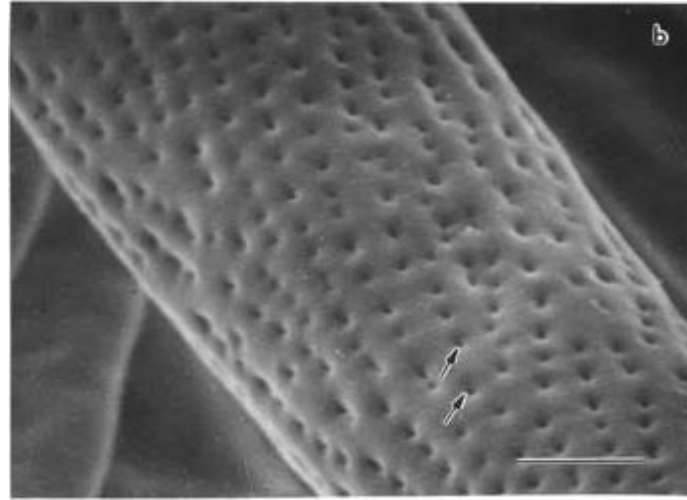
10. Excretory organs are malpighian tubules, green glands.



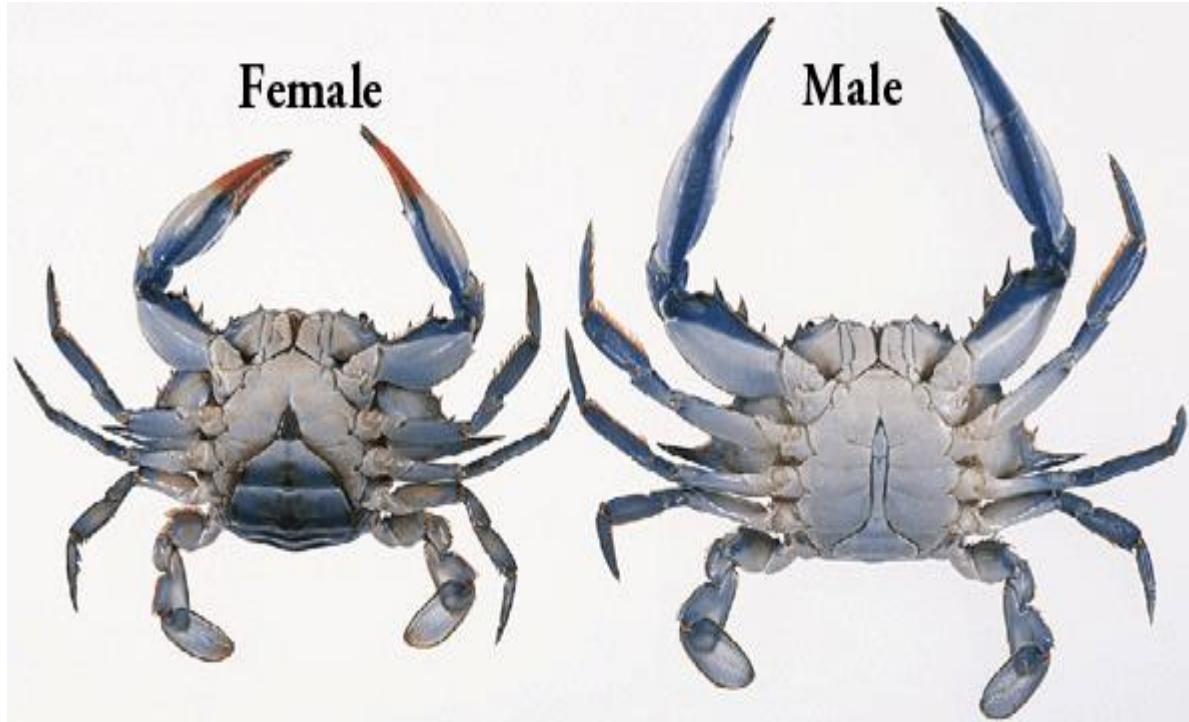
11. Nervous system comprised of a dorsal brain connected with a nerve ring and a double ventral nerve cord.



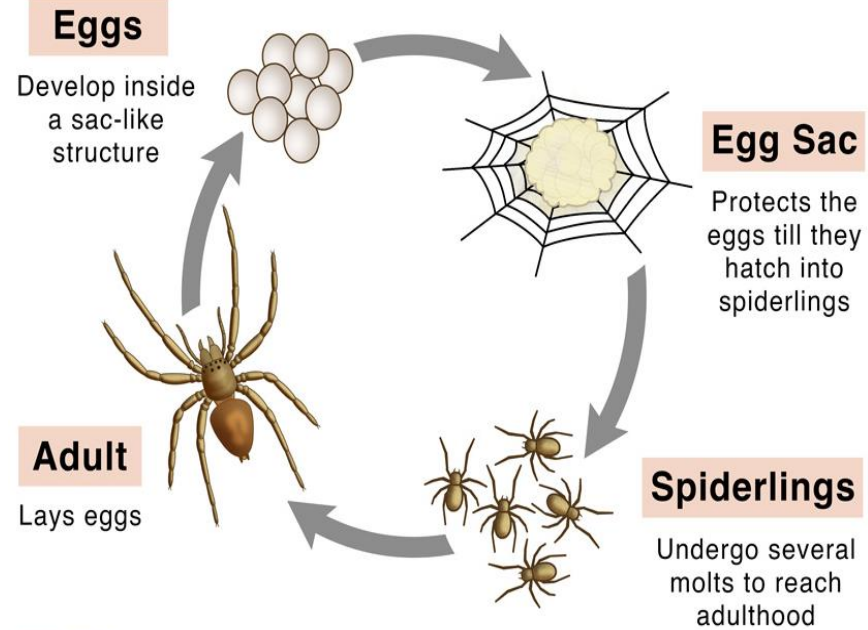
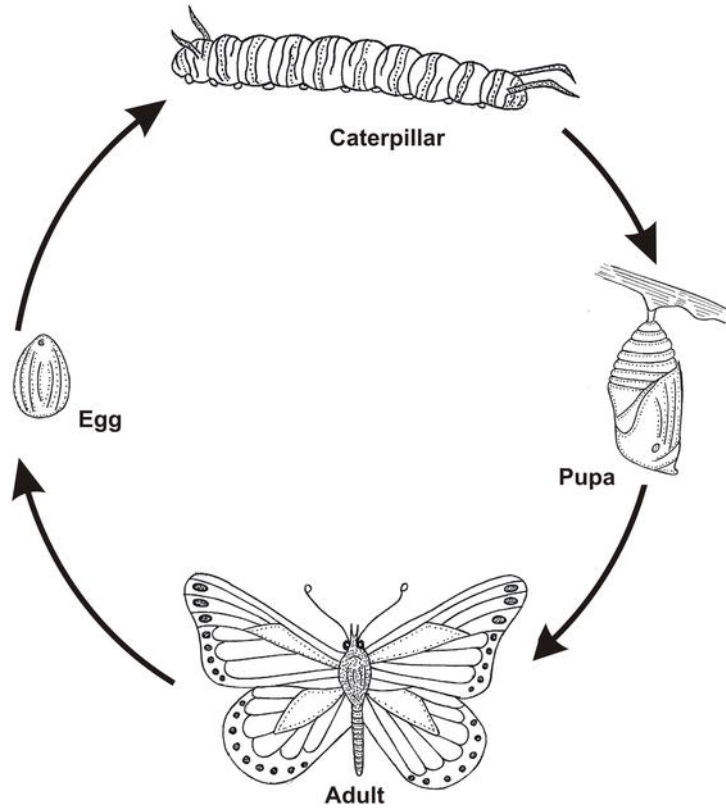
12. Sensory organs comprises of simple or compound eye, chemo and tactile receptors, balancing and auditory organs.



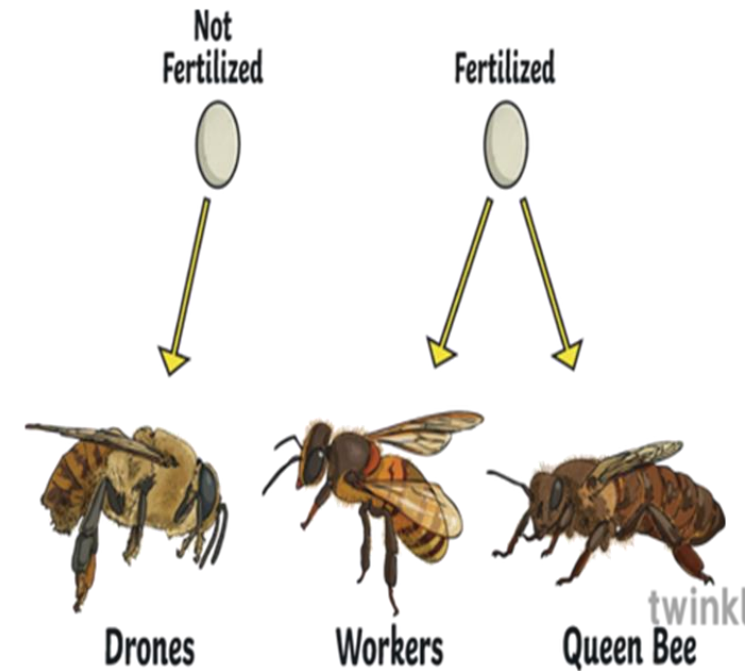
13. Separate sexes. Internal fertilization.



14. Direct or indirect development. Parthenogenesis occurs in some species.



SpiderIdentifications



twinkl

15. Well marked parental care.



Thanks